



Solutions for special applications

PSI Steel Insulators



12

Pipeline Accessories

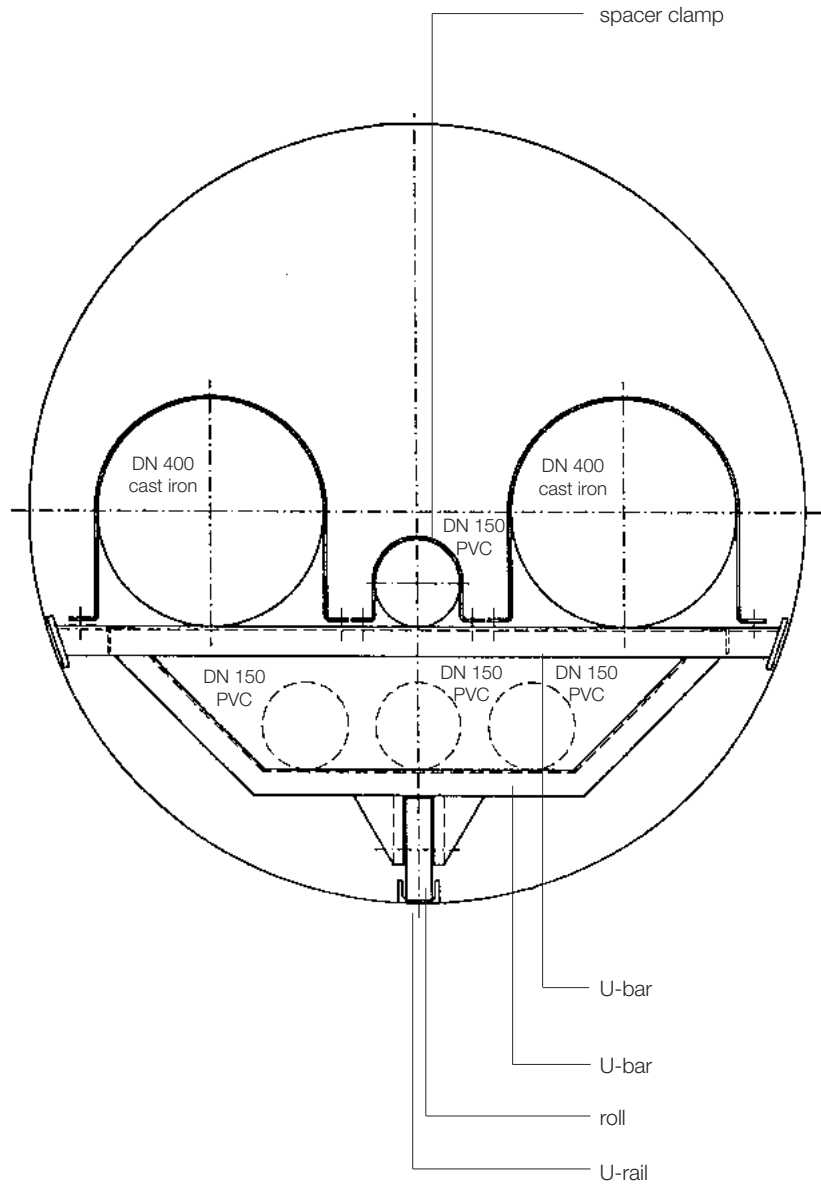


Examples:

- multiple pipes in exact defined position
- long distances
- permanent pipe-movement
- high temperature
- heavy weight
- integrated tensile
- hanging construction
- rollers for e.g. rough casing pipe surfaces

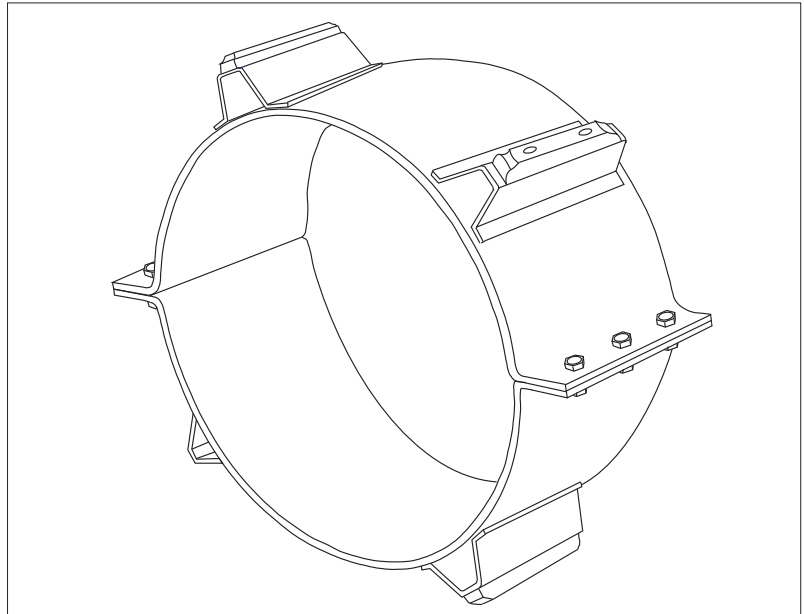
Call us for customised solutions.

Example:



PSI Steel Insulators

General Information



Often it is not possible to lay pipes in open ditches. For example, for rail or road crossings it is first necessary to drive casings underground. By using PSI steel insulators or roller rings, the carrier pipe can be inserted into the casing sleeve safely and efficient.

Skid roller insulators

- facilitate introduction by reducing friction between the carrier pipe and the casing, support the carrier pipe,
- act as spacers between pipe and casing; pipes can thus be placed in concentric or eccentric positions, ensure electric insulation of both pipes since the skid material is plastic.

Steel insulators

Steel insulators are preferred over plastic insulators in the following cases:

- high medium temperatures,
- strong pressure in large diameters (load-bearing capacity),
- wide gap between casing and carrier pipe diameter (up to 600 mm).

Typical steel insulator assembly

Each ring consists of two semi-circular halves which are clamped together by hexagonal bolts and nuts. Segments are 200 mm wide and tailored to suit customer requirements. We can supply wider segments if required.

Note

Performance data and technical information provided herein is intended for guide line purposes only. Suitability of product configurations for specific applications should be determined by the user.

PSI Steel Insulators

Technical Data



Material

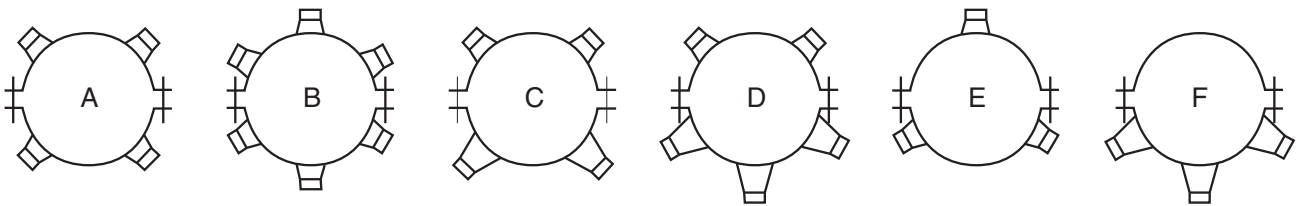
Ring halves and skid struts are made of 2-3 mm steel plate.
Surfaces without corrosion protection (black), hot-galvanized, plastic coated, as required.

Runners made of plastic.

Screws of high-resistance galvanized steel.

Varying skid heights on both the upper and the lower halves permit any position of the carrier pipe in the casing.

Combination examples



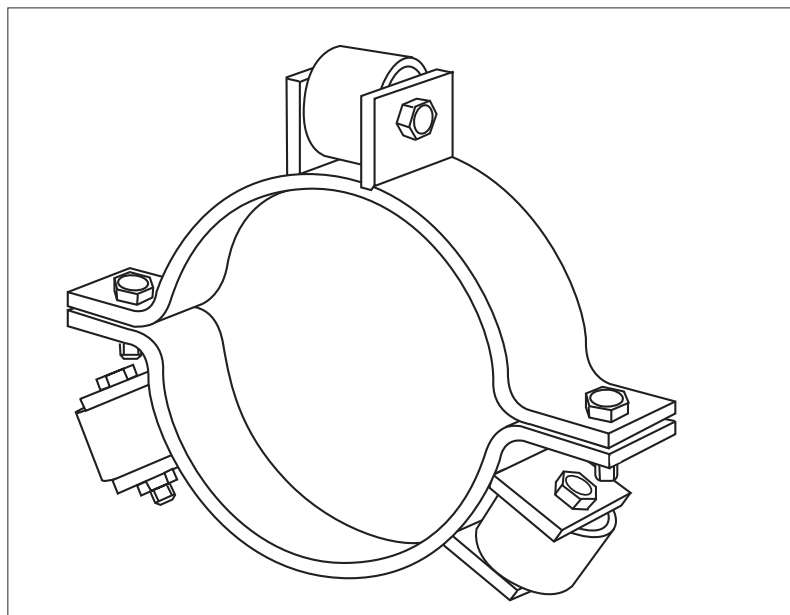
Ordering details

PSI steel insulators are tailor-made. Please specify

- carrier pipe O.D., sleeve O.D.
- casing O.D.
- is carrier pipe in concentric position
- if not, please add drawing.

Delivery time approx. 3 weeks.

Technical changes reserved.



Roller ring

The ring consists of two halves connected by means of screws. Rollers are fitted between welded-on struts and have the same function as the skid linings on the steel insulators.

Material

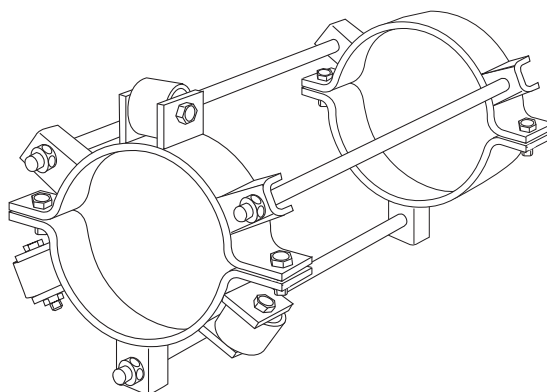
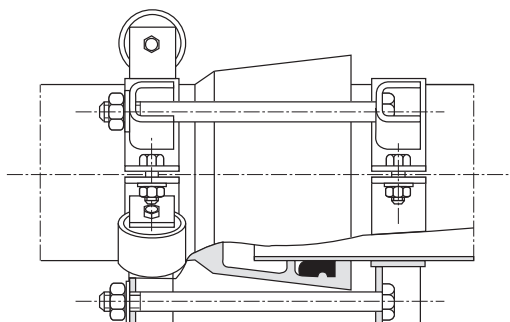
Ring halves and struts: 2 mm steel plate
 Rollers: polyamide or steel
 Bolts and screws: galvanized steel

Ordering details

see steel insulators

Roller ring with clamping ring for positive sleeve connection

To ensure that socket joints remain tight, we can offer a tie bar system which consists of a roller ring fixed on one side of the socket and a clamping ring on the other side. The two are joined by the tie bars.



Note

Performance data and technical information provided herein is intended for guide line purposes only. Suitability of product configurations for specific applications should be determined by the user.

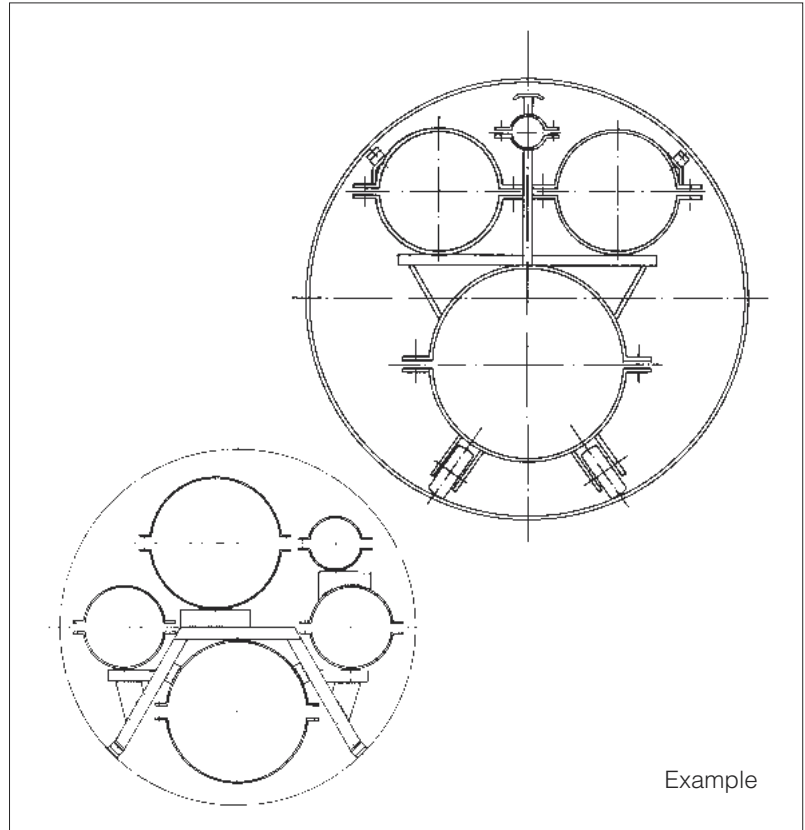
Technical changes reserved.

PSI Multiple clamping – customised

General Information



Multiple clamping



Multiple clamping rings are used to lay pipe bundles in one casing.

Material

Steel

Types

As required by the customer.

All types are tailor-made.

Suitable carrier pipe diameters are between 20 and 1200 mm. We will be pleased to assist you in selecting a suitable type.

Ordering details

- Carrier pipe O.D.,
- Sleeve O.D.,
- Casing I.D.,
- Drawing of carrier pipe position,
- Type of medium,
- Type of connection of carrier pipe segments,
- Length of casing runs.

Price on request.

Delivery time approx. 3 weeks, depending on quantity and sizes ordered.

Performance data and technical information provided herein is intended for guide line purposes only. Suitability of product configuration for specific applications should be determined by the user.

Technical changes reserved.