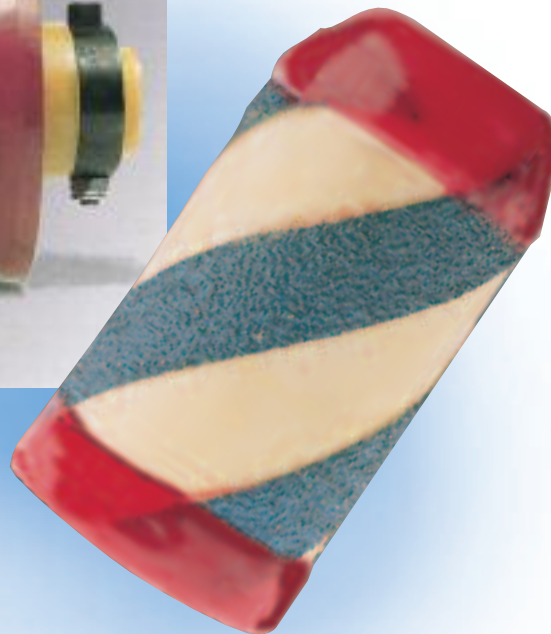
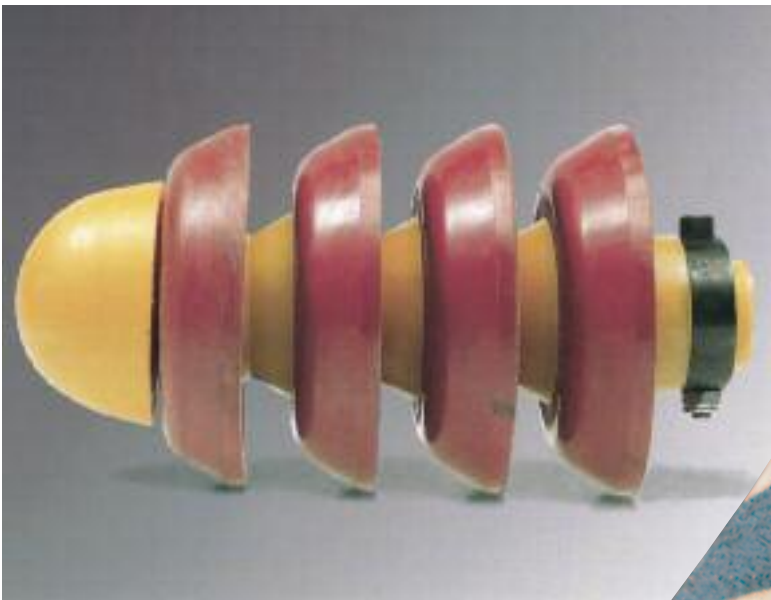


General Information

Technical Data

Type Selection

# PSI Pigs



Pipeline Accessories

# General Information



**For drying and dewatering**

PSI foam pigs are ideal tools for pipe drying or dewatering. They are available in sizes between 2" and 48". Larger sizes up to 64" are available on request.

**For filling, scouring and cleaning**

Pigs remove deposits and contaminants from the pipe, which is very important when different media are carried in the same pipeline. Different media can be sent through the pipeline simultaneously.

**For product separation**

All pigs are resistant to oil, gasoline and methanol. Other chemicals acc. to PSI resistance tables.

Technical changes reserved.

# PSI Foam-/Flexi-Pigs

## Technical Data



Application range for:	Type	Material	Ø inch	Density kg/m <sup>3</sup>	Coating Shore A	Temp. °C	LG m/s	max. lifetime in km*	Ø Reduct max.	min. Radius Bends	Fitting reduction
- drying - slight contamination - elimination of air humidity, - test pig for unknown contamination	PU-FP	PU-foam	2-64"	25	-	+5 - +80	1-4	ca. 45	50%	1,5 x D	yes
- drying - medium contamination for longer distances - dewatering	PU-Plain	PU-foam	2-64"	110	-	+5 - +80	1-4	ca. 90	15%	1,5 x D	-
	PU-Plain-S	PU-foam	2-24"	80	-	+5 - +80	1-4	ca. 90	20%	1,5 x D	yes
- cleaning for longer distances with contraction and heavier contamination, - hydrostatic test - sealing	PU-LR	PU-foam outer skin abrasion-proofed PU	2-64"	110	90	+5 - +80	1-4	ca. 90	10%	1,5 x D	yes
- cleaning for distances with lots of fittings	PU-LR-S	PU-foam outer skin abrasion-proofed PU	2-24"	80	90	+5 - +80	1-4	ca. 90	10%	1,5 x D	yes
- removing deposit - dehydration - cleaning of long distances - cleaning before initial operation of the pipeline	PU-CC	PU-foam outer skin abrasion-proofed PU at periphery PU-stripes (rotation effect)	2-64"	110	90	+5 - +80	1-4	ca. 90	10%	1,5 x D	-
- removing deposit - cleaning before initial operation of the pipeline,	PU-CC-S	PU-foam core outer skin abrasion-proofed PU at periphery PU-stripes (rotation effect)	2-24"	80	90	+5 - +80	1-4	ca. 90	15%	1,5 x D	yes
- long distance with heavy contamination - firmly bonded deposit  not usable for plastic pipelines	PU-AC	PU-foam core coil shaped inserted silicon carbid or corundum stripes, bottom and top, abrasion-proofed PU	2-64"	110	90	+5 - +80	1-4	ca. 60	15%	1,5 x D	yes
- highest cleaning benefit - heaviest encrustment - especially hard rust - long distances - especially firmly bonded deposit  not usable for plastic pipelines	PU-TWB	PU-foam core bottom and top, abrasion-proofed PU complete with steel brushes (Plastic brushes possible)	2-64"	110	90	+5 - +80	2-5	ca. 90	5%	1,5 x D	-

\*The max. lifetime are empirical values. Tolerances are possible

# PSI Foam-/Flexi-Pigs

## Technical Data

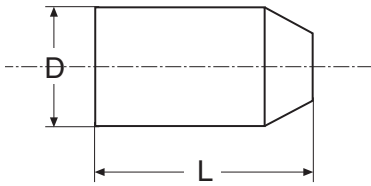


Application range for:	Type	Material	Ø inch	Density kg/m <sup>3</sup>	Coating Shore A	Temp. °C	LG m/s	max. lifetime in km*	Ø Reduct max.	min. Radius Bends	Fitting reduction
<ul style="list-style-type: none"> <li>- strong encrustment</li> <li>- especially strong rust</li> <li>- long pipelines,</li> <li>- especially insistent deposit</li> </ul> <p>use plasticbrush for plastic pipes</p>	PU-WB	PU-foam core coil-shaped inserted outer shell out of abrasion-proof PU, coil-shaped inserted wire brushes	2-64"	110	90	+5 - +80	2-5	ca. 90	10%	1,5 x D	-
<ul style="list-style-type: none"> <li>- filling and draining of pipelines</li> <li>- to separate different liquids</li> <li>- cleaning of softer deposits</li> </ul>	Flex S3	pig body PU 3 exchangable PU-collar	2-16"	-	75	-20 - +80	2-7	ca. 240	15	1,5 x D	-
		EPDM	2-16"	-	45-65	-50 - +150	2-7	ca. 240	15	1,5 x D	-
		NBR	2-16"	-	45-50	-30 - +110	2-7	ca. 240	15	1,5 x D	-
		CR Neopren	2-16"	-	45	-45 - +100	2-7	ca. 240	15	1,5 x D	-
<ul style="list-style-type: none"> <li>- to separate different liquids</li> <li>- displacement and cleaning pig for pipelines with paraffin or similar deposits</li> <li>- especially for pipelines with inner coating</li> </ul>	Flex S4	pig body PU 4 exchangable PU-collar	2-16"	-	75	-20 - +80	2-7	ca. 240	15	1,5 x D	-
		EPDM	2-16"	-	45-65	-50 - +150	2-7	ca. 240	15	1,5 x D	-
		NBR	2-16"	-	45-50	-30 - +110	2-7	ca. 240	15	1,5 x D	-
		CR Neopren	2-16"	-	45	-45 - +100	2-7	ca. 240	15	1,5 x D	-
<ul style="list-style-type: none"> <li>- cleaning of pipelines with narrow bows</li> <li>- for harder deposits</li> </ul>	Flex C2	pig body PU 2 exchangable PU-collar + 2 steel wire brushes	2-16"	-	75	-20 - +80	2-7	ca. 240	10	1,5 x D	-
	Flex C3	pig body PU 3 exchangable PU-collar + 3 steel wire brushes	2-16"	-	75	-20 - +80	2-7	ca. 240	10	1,5 x D	-
<ul style="list-style-type: none"> <li>- calibrating</li> <li>- locate and removal of things</li> </ul>	Flex G2	pig body PU 2 exchangable PU-collar 1 calibration disc aluminium/steel/mild steel	2-16"	-	75	-20 - +80	2-5	ca. 240	15	1,5 x D	-
	Flex G3	pig body PU 1 calibration disc aluminium/steel/mild steel	2-16"	-	75	-20 - +80	2-5	ca. 240	15	1,5 x D	-
		EPDM	2-16"	-	45-65	-50 - +150	2-5	ca. 240	15	1,5 x D	-
		NBR	2-16"	-	45-50	-30 - +110	2-5	ca. 240	15	1,5 x D	-
		CR Neopren	2-16"	-	45	-45 - +100	2-5	ca. 240	15	1,5 x D	-
		FPM Viton	2-16"	-	50-80	-20 - +200	2-5	ca. 240	15	1,5 x D	-

\*The a.m. dates are empirial values. Tolerances are possible

# PSI Foam Pigs

## Type FP



The nominal diameters ND indicated in the charts correspond to the internal diameter of the pipeline.  
 All dimensions are in mm ( $\pm 2\%$ ).  
 For ordering use inch dimensions.

### Type FP

Made of soft, elastic polyether foam, reinforced with a polyurethane bottom.

Being highly flexible, FP foam pigs easily pass through short radius bends, valves and elbows.

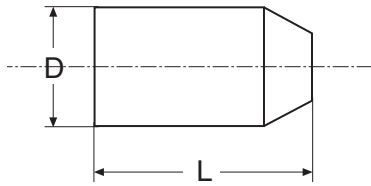
For drying and mild cleaning.

Density approx. 25 kg/m<sup>3</sup> (2 lb/ft<sup>3</sup>) Type FP

DN		D	L	min. Radius Bends
Inch	mm			
2,0	50	75	150	1,5 x D
2,5	65	90	200	1,5 x D
3,0	80	100	220	1,5 x D
4,0	100	130	250	1,5 x D
5,0	125	150	275	1,5 x D
6,0	150	190	300	1,5 x D
7,0	175	200	320	1,5 x D
8,0	200	230	360	1,5 x D
10,0	250	290	430	1,5 x D
12,0	300	350	560	1,5 x D
14,0	350	400	600	1,5 x D
16,0	400	450	700	1,5 x D
18,0	450	520	750	1,5 x D
20,0	500	570	800	1,5 x D
22,0	550	620	850	1,5 x D
24,0	600	670	900	1,5 x D
26,0	650	730	1100	1,5 x D
28,0	700	770	1100	1,5 x D
30,0	750	820	1150	1,5 x D
32,0	800	880	1250	1,5 x D
34,0	850	930	1300	1,5 x D
36,0	900	980	1350	1,5 x D
40,0	1000	1080	1540	1,5 x D
42,0	1050	1120	1680	1,5 x D
44,0	1100	1190	1680	1,5 x D
48,0	1200	1300	1800	1,5 x D
56,0	1400	1500	2240	1,5 x D
64,0	1600	1700	2520	1,5 x D



# Type PU-Plain and PU-Plain S



The nominal diameters ND indicated in the charts correspond to the internal diameter of the pipe.  
 All dimensions are in mm ( $\pm 2\%$ ).  
 For ordering use inch dimensions.

### Type PU-Plain

Made of high-density polyurethane foam, reinforced with a water-tight polyurethane bottom.

For mild cleaning or drying of long runs after dewatering. Density approx. 110-115 kg/m<sup>3</sup> (6-7 lb/ft<sup>3</sup>). These types easily pass through short radius bends (1,5 D). Also available with sealed head.

DN		D	L	min. Radius Bends
Inch	mm			
2,0	50	60	155	1,5 x D
2,5	65	75	155	1,5 x D
3,0	80	85	155	1,5 x D
4,0	100	110	195	1,5 x D
5,0	125	135	220	1,5 x D
6,0	150	168	266	1,5 x D
7,0	175	177	280	1,5 x D
8,0	200	215	330	1,5 x D
10,0	250	270	415	1,5 x D
12,0	300	321	510	1,5 x D
14,0	350	348	530	1,5 x D
16,0	400	410	595	1,5 x D
18,0	450	455	660	1,5 x D
20,0	500	505	760	1,5 x D
22,0	550	555	810	1,5 x D
24,0	600	605	880	1,5 x D
26,0	650	665	990	1,5 x D
28,0	700	710	945	1,5 x D
30,0	750	760	1130	1,5 x D
32,0	800	810	1170	1,5 x D
34,0	865	855	1340	1,5 x D
36,0	900	910	1370	1,5 x D
40,0	1000	1010	1470	1,5 x D
42,0	1050	1060	1580	1,5 x D
48,0	1200	1220	1760	1,5 x D

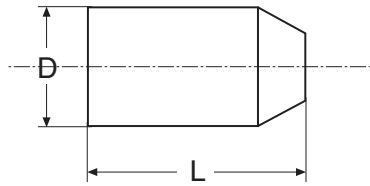


### Type PU-Plain-S

Same as PU-Plain, however softer. Density approx. 80-85 kg/m<sup>3</sup> (5 lb/ft<sup>3</sup>).  
 Only available up to size 24", also with sealed head.



# Type PU-LR and PU-LR S



The nominal diameters ND indicated in the charts correspond to the internal diameter of the pipe.  
 All dimension are in mm ( $\pm 2\%$ ).  
 For ordering use inch dimensions.

### Type PU-LR

Made of high-density polyurethane foam, fully coated with extra tough polyurethane rubber (hardness approx. 70-80 Shore).

Recommended for cleaning long, straight runs with narrow sections and heavy contamination.

Density approx. 110-115 kg/m<sup>3</sup> (6-7 lb/ft<sup>3</sup>).

This type easily passes through 1.5 D bends.

DN		D	L	min. Radius Bends
Inch	mm			
2,0	50	60	155	1,5 x D
2,5	65	75	155	1,5 x D
3,0	80	85	155	1,5 x D
4,0	100	110	195	1,5 x D
5,0	125	135	220	1,5 x D
6,0	150	168	266	1,5 x D
7,0	175	177	280	1,5 x D
8,0	200	215	330	1,5 x D
10,0	250	270	415	1,5 x D
12,0	300	321	510	1,5 x D
14,0	350	348	530	1,5 x D
16,0	400	410	595	1,5 x D
18,0	450	463	760	1,5 x D
20,0	500	513	760	1,5 x D
22,0	550	563	810	1,5 x D
24,0	600	613	880	1,5 x D
26,0	650	673	990	1,5 x D
28,0	700	718	945	1,5 x D
30,0	750	768	1130	1,5 x D
32,0	800	818	1170	1,5 x D
34,0	865	863	1340	1,5 x D
36,0	900	918	1370	1,5 x D
40,0	1000	1018	1470	1,5 x D
42,0	1050	1068	1580	1,5 x D
48,0	1200	1228	1760	1,5 x D



### Type PU-LR-S

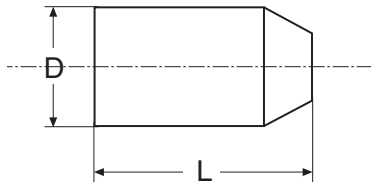
Same as PU-LR, however with a softer core (hardness approx. 55 Shore).

Recommended for cleaning multi-dimensional pipes and pipes with short radius bends. Density approx. 80-85 kg/m<sup>3</sup> (5 lb/ft<sup>3</sup>).

Only available up to size 24".



# Type PU-CC and PU-CC S



The nominal diameters ND indicated in the charts correspond to the internal diameter of the pipe.  
All dimensions are in mm ( $\pm 2\%$ ).  
For ordering use inch dimensions.

### Type PU-CC

Made of high-density polyurethane foam with a criss-cross coating of extra tough polyurethane rubber allowing the pig to rotate and imparting to it high flexibility.

Recommended for efficient removal of deposits and for dewatering, e.g after hydrostatic tests. This type easily passes through 1,5 D bends. Density approx. 110-115 kg/m<sup>3</sup> (6-7 lb/ft<sup>3</sup>).

DN		D	L	min. Radius Bends
Inch	mm			
2,0	50	60	155	1,5 x D
2,5	65	75	155	1,5 x D
3,0	80	85	155	1,5 x D
4,0	100	110	195	1,5 x D
5,0	125	135	220	1,5 x D
6,0	150	168	266	1,5 x D
7,0	175	177	280	1,5 x D
8,0	200	215	330	1,5 x D
10,0	250	270	415	1,5 x D
12,0	300	321	510	1,5 x D
14,0	350	348	530	1,5 x D
16,0	400	410	595	1,5 x D
18,0	450	463	760	1,5 x D
20,0	500	513	760	1,5 x D
22,0	550	563	810	1,5 x D
24,0	600	613	880	1,5 x D
26,0	650	673	990	1,5 x D
28,0	700	718	945	1,5 x D
30,0	750	768	1130	1,5 x D
32,0	800	818	1170	1,5 x D
34,0	865	863	1340	1,5 x D
36,0	900	918	1370	1,5 x D
40,0	1000	1018	1470	1,5 x D
42,0	1050	1068	1580	1,5 x D
48,0	1200	1228	1760	1,5 x D

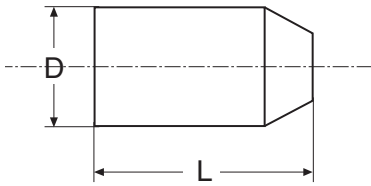


### Type PU-CC-S

Same as PU-CC, however with a softer core. Density approx. 80-85 kg/m<sup>3</sup> (5 lb/ft<sup>3</sup>). Only available up to size 24".



# Type PU-WB and PU-TWB



The nominal diameters ND indicated in the charts correspond to the internal diameter of the pipe.  
 All dimensions are in mm ( $\pm 2\%$ ).  
 For ordering use inch dimensions.

### Type PU-WB

Made of high-density polyurethane foam with a coating of extra tough polyurethane rubber causing the pig to rotate.  
 Steel wire brushes, embedded in the pig, are set at an angle to give maximum scraping power.

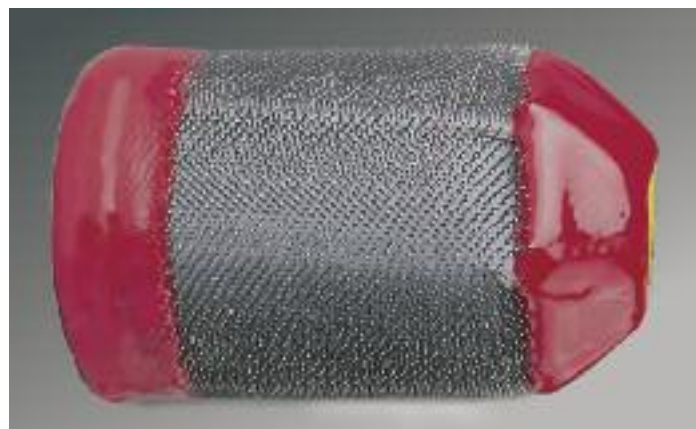
Recommended to remove heavy deposits and rust, also in long runs.  
 This type easily passes through 1,5 D bends.  
 Density approx. 110-115 kg/m<sup>3</sup> (6-7 lb/ft<sup>3</sup>).

DN		D	L	min. Radius Bends
Inch	mm			
2,0	50	60	155	1,5 x D
2,5	65	75	155	1,5 x D
3,0	80	85	155	1,5 x D
4,0	100	110	195	1,5 x D
5,0	125	135	220	1,5 x D
6,0	150	168	266	1,5 x D
7,0	175	177	280	1,5 x D
8,0	200	215	330	1,5 x D
10,0	250	270	415	1,5 x D
12,0	300	321	510	1,5 x D
14,0	350	348	530	1,5 x D
16,0	400	410	595	1,5 x D
18,0	450	463	760	1,5 x D
20,0	500	513	760	1,5 x D
22,0	550	563	810	1,5 x D
24,0	600	613	880	1,5 x D
26,0	650	673	990	1,5 x D
28,0	700	718	945	1,5 x D
30,0	750	768	1130	1,5 x D
32,0	800	818	1170	1,5 x D
34,0	865	863	1340	1,5 x D
36,0	900	918	1370	1,5 x D
40,0	1000	1018	1470	1,5 x D
42,0	1050	1068	1580	1,5 x D
48,0	1200	1228	1760	1,5 x D



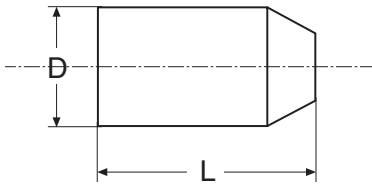
### Type PU-TWB

Same as PU-WB, however without polyurethane sections.  
 Instead, entirely coated with wire brush.



Technical changes reserved.

# Type PU-AC and Special Versions



The nominal diameters ND indicated in the charts correspond to the internal diameter of the pipe.  
All dimensions are in mm ( $\pm 2\%$ ).  
For ordering use inch dimensions.

### Type PU-AC (abrasive coated)

Same as PU-CC, however with an additional carborundum coating.

Recommended for removing heavy contaminations, hard deposits and corrosion, also in long runs.

This type easily passes through 1.5 D bends.

Density approx. 110-115 kg/m<sup>3</sup> (9-10 lb/ft<sup>3</sup>).

DN		D	L	min. Radius Bends
Inch	mm			
2,0	50	60	155	1,5 x D
2,5	65	75	155	1,5 x D
3,0	80	85	155	1,5 x D
4,0	100	110	195	1,5 x D
5,0	125	135	220	1,5 x D
6,0	150	168	266	1,5 x D
7,0	175	177	280	1,5 x D
8,0	200	215	330	1,5 x D
10,0	250	270	415	1,5 x D
12,0	300	321	510	1,5 x D
14,0	350	348	530	1,5 x D
16,0	400	410	595	1,5 x D
18,0	450	463	760	1,5 x D
20,0	500	513	760	1,5 x D
22,0	550	563	810	1,5 x D
24,0	600	613	880	1,5 x D
26,0	650	673	990	1,5 x D
28,0	700	718	945	1,5 x D
30,0	750	768	1130	1,5 x D
32,0	800	818	1170	1,5 x D
34,0	865	863	1340	1,5 x D
36,0	900	918	1370	1,5 x D
40,0	1000	1018	1470	1,5 x D
42,0	1050	1068	1580	1,5 x D
48,0	1200	1228	1760	1,5 x D



## PSI foam pigs special types

### Loops

All foam pigs, except types FP and PU-Plain, can be equipped with one or two loops, if required. Starting with DIN 20" one loop is standard.

### Various shapes

If required, all pigs are available with both ends conical or cylindrical. Such pigs are suitable for bi-directional operations.

### Brush-type pig

Consisting of a hard wooden core and nylon brush. For easy cleaning of short pipes.