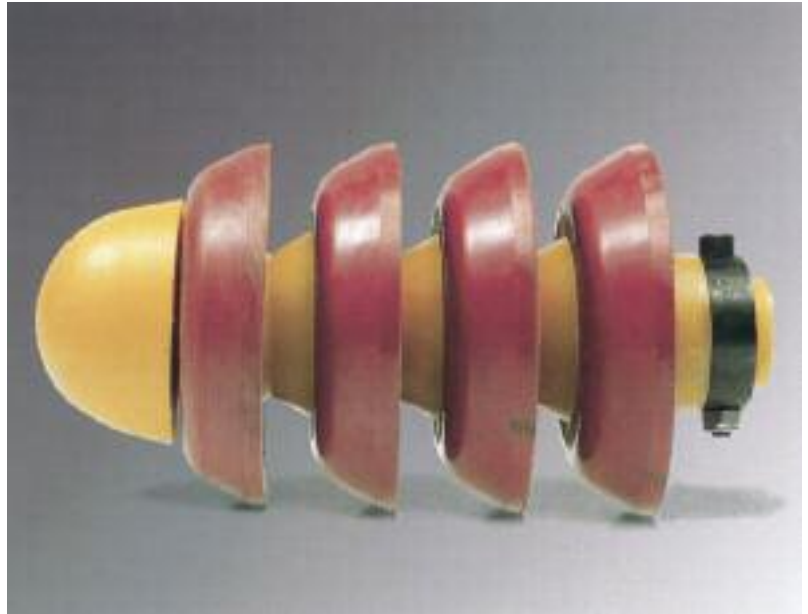


PSI Polyurethane Flexi-Pigs

General Information



- For**
- separation
 - batching
 - cleaning
 - gauging

PSI flexi-pigs are ideal tools for cleaning, separating, batching and gauging pipelines.

These pigs are equipped with replaceable polyurethane cups and/or circular wire brushes mounted on a flexible polyurethane body up to 24".

Mounted on a steel body available on request.
(possible sizes 2" - 56").

Technical changes reserved.

PSI Polyurethane Flexi-Pigs

Type Flex-S3 and Flex-S4



Type Flex-S3

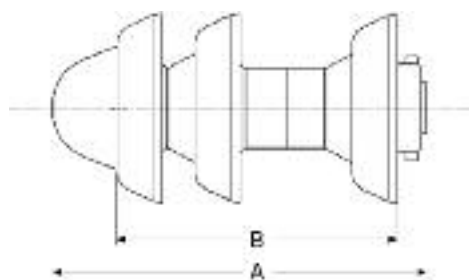
Equipped with 3 replaceable polyurethane cups mounted on a flexible polyurethane body.

This type easily passes through 1.5 D bends. As the pigs are entirely made of polyurethane, they are particularly suitable for internally coated pipelines.

Separation pigs can also be used as batching or cleaning pigs for pipelines with paraffin or similar deposits and for cleaning new pipelines.

For special applications the pigs are available in natural colour polyurethane without addition of colouring substances.

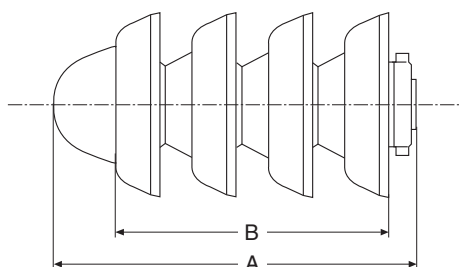
Guide bars are recommended when the branch opening is 75% of the pipe ID.



DN		A		B		Weight kg	min. Radius Bends
Inch	mm	Inch	mm	Inch	mm		
2,0	50	5,12	130	3,94	100	0,35	1,5 x D
3,0	80	7,28	185	4,92	125	0,55	1,5 x D
4,0	100	8,27	210	6,10	155	0,80	1,5 x D
6,0	150	12,80	325	8,66	220	3,00	1,5 x D
8,0	200	15,55	395	11,42	290	5,00	1,5 x D
10,0	250	19,29	490	14,57	370	9,00	1,5 x D
12,0	300	21,85	555	17,32	440	13,00	1,5 x D
14,0	350	24,41	620	19,29	490	20,00	1,5 x D
16,0	400	27,17	690	22,05	560	26,00	1,5 x D

Type Flex-S4

Type Flex-S4 corresponds to type Flex-S3, but it is equipped with 4 replaceable polyurethane cups.



DN		A		B		Weight kg	min. Radius Bends
Inch	mm	Inch	mm	Inch	mm		
2,0	50	5,12	130	3,94	100	0,40	1,5 x D
3,0	80	7,28	185	4,92	125	0,60	1,5 x D
4,0	100	8,27	210	6,10	155	1,00	1,5 x D
6,0	150	12,80	325	8,66	220	3,50	1,5 x D
8,0	200	15,55	395	11,42	290	6,00	1,5 x D
10,0	250	19,29	490	14,57	370	11,00	1,5 x D
12,0	300	21,85	555	17,32	440	16,00	1,5 x D
14,0	350	24,41	620	19,29	490	23,00	1,5 x D
16,0	400	27,17	690	22,05	560	32,50	1,5 x D

Available spare parts

- driving cup,
- body,
- diabolo spacer set,
- ring spacer,
- socket head screw,
- lock nuts,
- steel locking ring.

Technical changes reserved.

PSI Polyurethane Flexi-Pigs

Type Flex-C2 and Flex-C3

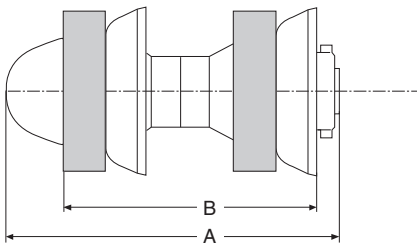


Type FLEX-C2

This type is equipped with 2 polyurethane cups and circular steel wire brushes mounted on a flexible polyurethane body. It easily passes through 1.5 D bends.

This type is also available with stainless steel brushes or plastic brushes for internally coated pipelines.

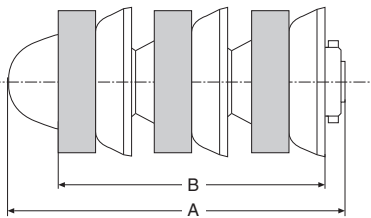
Guide bars are recommended when the branch opening is 75% of the pipe I.D.



DN	A		B		Weight kg	min. Radius Bends	
	Inch	mm	Inch	mm			
2,0	50	5,12	130	3,94	100	0,60	1,5 x D
3,0	80	7,28	185	4,92	125	0,90	1,5 x D
4,0	100	8,27	210	6,10	155	1,10	1,5 x D
6,0	150	12,80	325	8,66	220	4,00	1,5 x D
8,0	200	15,55	395	11,42	290	7,00	1,5 x D
10,0	250	19,29	490	14,57	370	11,00	1,5 x D
12,0	300	21,85	555	17,32	440	15,00	1,5 x D
14,0	350	24,41	620	19,29	490	24,00	1,5 x D
16,0	400	27,17	690	22,05	560	29,00	1,5 x D

Type FLEX-C3

Type FLEX-C3 corresponds to type FLEX-C2, but it is equipped with 3 steel wire brushes and 3 polyurethane cups.



DN	A		B		Weight kg	min. Radius Bends	
	Inch	mm	Inch	mm			
2,0	50	5,12	130	4,13	100	0,90	1,5 x D
3,0	80	7,28	185	5,91	125	1,00	1,5 x D
4,0	100	8,27	210	6,50	155	1,50	1,5 x D
6,0	150	12,80	325	10,24	220	5,50	1,5 x D
8,0	200	15,55	395	12,21	290	10,00	1,5 x D
10,0	250	19,29	490	14,57	370	15,00	1,5 x D
12,0	300	21,85	555	16,34	440	21,00	1,5 x D
14,0	350	24,41	620	17,72	490	32,00	1,5 x D
16,0	400	27,17	690	20,47	560	39,00	1,5 x D



Available spare parts

- driving cup,
- body,
- diabolo spacer set,
- ring spacer,
- socket head screw,
- lock nuts,
- steel locking ring,
- steel brush.

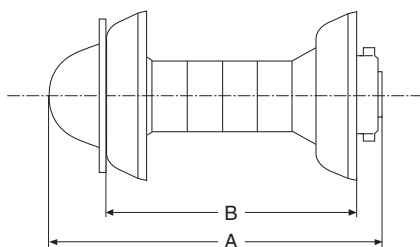
Technical changes reserved.

PSI Polyurethane Flexi-Pigs

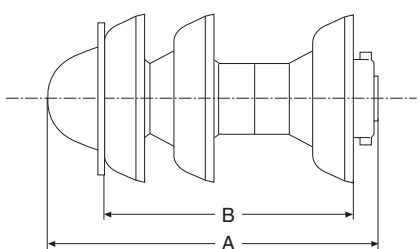
Type Flex-G2 and Flex-G3



Type FLEX - G2



Type FLEX - G3



Gauging pigs are used to ensure that there is no excessive weld penetration, and to locate and remove obstructions that might prevent the passage of pigs.

Mounted on a very flexible body, these pigs are available with 2 (FLEX-G2) or 3 (FLEX-G3) replaceable polyurethane cups and a aluminium gauging plate with a diameter of normally 90% or 95% of the pipe I.D. On request, these plates are available in mild steel. When ordering, please specify the gauging plate's diameter.

This type easily passes through 1.5 D bends.

Guide bars are recommended when the branch opening is 75% of the pipe I.D.

FLEX-G2 and FLEX-G3							
DN		A		B		Weight kg (G2)	min. Radius Bends
Inch	mm	Inch	mm	Inch	mm		
2,0	50	5,12	130	3,94	100	0,40	1,5 x D
3,0	80	7,28	185	4,92	125	0,60	1,5 x D
4,0	100	8,27	210	6,10	155	1,08	1,5 x D
6,0	150	12,80	325	8,66	220	3,00	1,5 x D
8,0	200	15,55	395	11,42	290	5,00	1,5 x D
10,0	250	19,29	490	14,57	370	9,00	1,5 x D
12,0	300	21,85	555	17,32	440	12,00	1,5 x D
14,0	350	24,41	620	19,29	490	18,00	1,5 x D
16,0	400	27,17	690	22,05	560	25,00	1,5 x D

Available spare parts

- driving cup,
- body,
- diabolo spacer set,
- ring spacer,
- socket head screw,
- lock nuts,
- steel locking ring,
- gauging plate.

Technical changes reserved.

PSI Polyurethane Flexi-Pigs

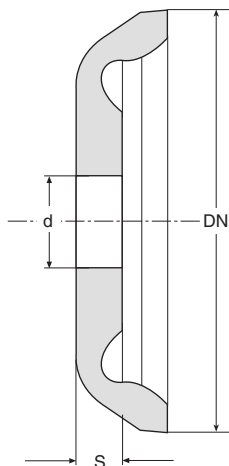
Pig Cups



These cups' exceptional wear resistance, combined with a unique cup design, ensures a maximum scraping and sealing effect.

The cups are resistant to most products carried in pipelines, e.g. natural gas, crude oil, refined hydrocarbon products, most chemicals, vegetable oils and food products.

For special applications the cups are also available in natural coloured polyurethane without addition of colouring substances.



DN		S		d		Weight kg
Inch	mm	Inch	mm	Inch	mm	
2,0	50	0,32	8	0,41	14	0,02
3,0	80	0,39	10	1,06	20	0,04
4,0	100	0,47	12	1,06	27	0,12
6,0	150	0,79	20	1,91	49	0,32
8,0	200	0,87	22	1,91	49	0,70
10,0	250	0,98	25	2,38	61	1,40
12,0	300	1,10	28	2,38	61	2,30
14,0	350	1,22	31	3,01	76,5	3,20
16,0	400	1,38	35	3,01	76,5	5,00

The cup's centre hole can be modified to suit customer requirements.

Technical changes reserved